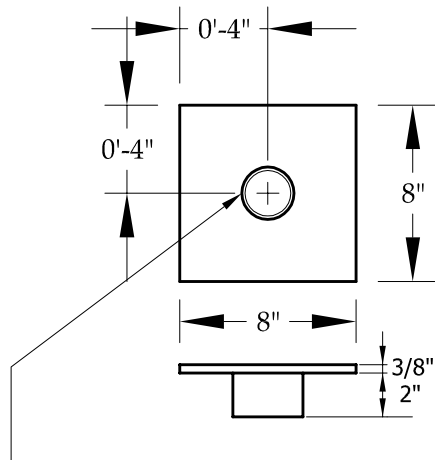


DETAIL B
N.T.S.

NOTES:

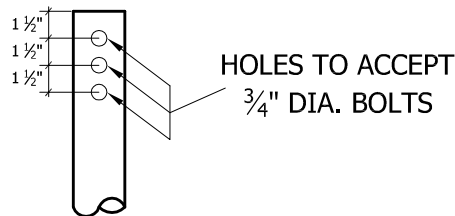
1. ULTIMATE COMPRESSION LOAD 60 KIPS
2. LOAD TO TORQUE RATIO (KT) = 12*
3. TORQUE STRENGTH RATING = 6,000 FT-LB
4. SHAFT: ROUND STRUCTURAL ERW TUBING PER ASTM A500, GRADE B, 2.875" O.D.
5. USE $\frac{3}{4}$ " BOLTS TO ATTACH TO AN EXTENSION
6. COLD FORM EXTENSIONS
7. AVAILABLE NOMINAL LENGTHS ARE 5', 7' AND 10.5'
8. COLD FORMED RIBS ON HELIX TO INCREASE RIGIDITY AND STRENGTH.
9. AVAILABLE HELIX SIZES ARE 8", 12" AND 14" IN DIAMETER.
10. ROBOTIC WELDING IS USED TO CONTROL QUALITY.



2.375" O.D. x 0.154" Wall
Round Structural ERW Tubing
per ASTM A500 Grade B

PILE CAP
N.T.S.

2 $\frac{7}{8}$ " O.D. SCH40
0.203" NOMINAL WALL THICKNESS



DETAIL A
N.T.S.

* IT CAN VARY BASED ON SOIL CHARACTERISTICS.



<p>Title: CANTSINK HELICAL PILE LEAD</p>		<p>71 First Avenue, N.W. Lilburn, Georgia 30047 678-280-PILE(7453) FAX: 678-280-3476</p>	
		<p>Catalog No. 2.5-40L07-14</p>	
<p>Project: --</p>		<p>Address: --</p>	
<p>Revision: 09-2014</p>	<p>Scale: N.T.S.</p>	<p>Drawn by: LXSS</p>	<p>Sheet: 1/1</p>